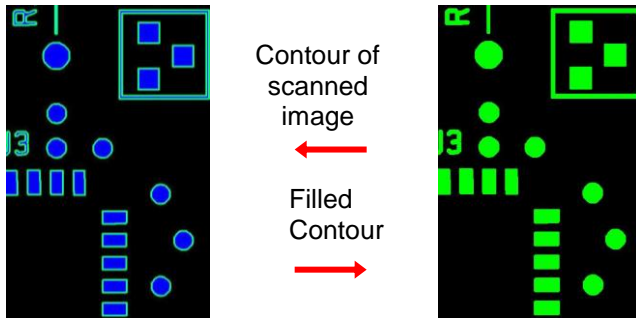


# ScanFAB Lite & Xtra Lite™

## Linking existing designs to CAD and production



### WHAT IS ScanFAB Lite?

ScanFAB Lite is a fully integrated, stand-alone workstation linking existing or old designs with today's automated production environment.

ScanFAB Lite uses Windows based software integrated with a high-resolution, calibrated flatbed scanner. Scanning can be performed in color or B/W mode. This combination allows fast vectorization of data for original board designs, regardless of input.

#### ScanFAB Xtra-Lite

A software only version is also available which imports un-calibrated standard TIFF or BMP images from any scanner platform and then converts the image to vector format using the same processes.

### INPUT DATA VERSATILITY

ScanFAB Lite adds flexibility to the fabrication process. Utilizing its calibrated scanner, ScanFAB Lite inputs silver or diazo film, Mylar images, technical drawings, PCBs or your original hand-taped designs to produce 274X Gerber data.

### AUTOMATIC FEATURES

Tired of using slow vectorization methods? ScanFAB Lite uses a one-button feature that quickly and automatically vectorizes the image. Data is converted to vector format by creating a contour and fill of image, and generating a Gerber 274X formatted output file. ScanFAB Lite is a one step, low-cost vectorization tool.

### WHY USE ScanFAB Lite?

- **Necessity:** Supply production with 274X Gerber data.
- **Flexibility:** Use Silver film, Mylar, Diazo, Glass, PCB, paper as input.
- **Security:** Prevent film/drawing deterioration by storing images in electronic format.
- **Security:** Archive multiple copies of designs, both on and off-site.

### SCANNING

- Silver Film, Mylar, Diazo, PCBs, paper
- 400, 1000, 2000, 3200 and 4000 DPI

### AUTOMATIC FUNCTIONS

- Automatic contour and fill of image, creating a 274X formatted Gerber file

### OUTPUT FILES

- Gerber files (274X)

### UPGRADEABLE

ScanFAB Lite can easily be upgraded to have full reverse engineering (ScanFAB) capabilities.

### SCANNER

- High-Resolution Flatbed Scanner, Size A3: (400/1000/2000/3200\*/4000\*/4800 dpi)
- Calibrated Accuracy:  $\pm 0.0010''$  ( $\pm 0.0254\text{mm}$ )
- Scanning Bed Area: 11.7" x 16.5" (297mm x 420mm)
- Maximum Work Area: 32.0" x 32.0" (813mm x 813mm)

### COMPUTER\*\*

- Multi Core Processor - 3 GHz
- 1 TB 7200 RPM HD, 8 - 16 GB RAM
- Flat Panel Monitor
- Ethernet Connection
- Windows 10 - 64-Bit
- 2 avail. USB2 or USB3 ports

\*Recommended minimum requirements for customer-supplied PC.

### ADDITIONAL SYSTEM COMPONENTS

- Precision Glass Calibration Grid
- Software Protection Key
- Scanning Accessory Package

(All specifications and designs subject to change without notice.)

The following are trademarks of the indicated companies: Gerber, Ucamco; Windows 10, Microsoft®. ScanFAB Lite™ and ScanFAB XtraLite™ are a trademarks of ScanCAD International, Inc.



26437 Conifer Rd.

Conifer, Co 80433 USA

T: +1 303.697.8888

F: +1 303.697.8580

[info@scancad.com](mailto:info@scancad.com)

[www.scancad.com](http://www.scancad.com)