

ScanINSPECT AFI Lite & Xtra Lite™

Automatic Film Inspection

WHAT IS ScanINSPECT AFI Lite?

ScanINSPECT AFI Lite is a fully integrated, stand-alone inspection workstation for film, diazo, photo mask, chrome, glass plates, etc.

ScanINSPECT AFI Lite uses a PC Windows-based software package integrated with a high-resolution, A3 size flatbed scanner.

ScanINSPECT AFI Xtra-Lite

ScanINSPECT AFI Xtra-Lite is a software-only version which imports un-calibrated standard TIFF or BMP images from any imaging platform (scanner, microscope, X-ray, etc..) and offers geometry inspection capabilities.

AUTOMATIC FEATURES

ScanINSPECT AFI Lite performs an Automatic Optical Inspection detecting very small shorts, opens, mouse bites, pinholes, dust, and other defects using geometry inspection algorithms. The software creates a final inspection report identifying any errors. The system automatically creates an entry in the inspection log file after a report is generated.

VERIFICATION / INSPECTION

Worried about the quality of existing films? Use ScanINSPECT AFI Lite to verify film integrity prior to production. The new geometry inspection checks features and problems smaller than your minimum trace/space width, down to 0.0003" (0.008mm) at 4000 DPI.

These functions verify films for production errors, such as: opens/shorts, mouse bites, and pinholes. The system steps the operator automatically through all discrepancies of the verification results.

SYSTEM FEATURES

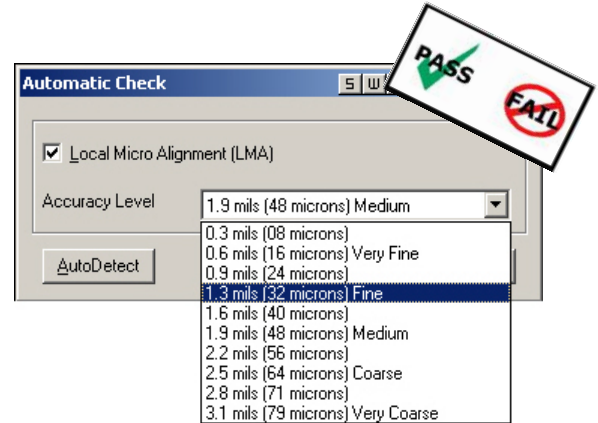
IMPORT

- Scan film, diazo, paper, mylar, glass in monochrome.
- Import BMP (B&W, gray, color) and TIFF (uncompressed black-and-white) images from other imaging platforms.

AUTOMATIC FUNCTIONS

- Geometry Inspection for opens, shorts, mouse bites, pinholes, and dust.
- Inspection report and log file.
- Print scanned image and inspection report.

Rev18022620



TECHNICAL SPECIFICATIONS

SCANNER (Lite only version)

- High-Resolution Flatbed Scanner, Size A3: (400,1000,1600,2000,2400,3200,4000,4800 dpi)
- A3-Scanning Bed Area: 11.7" x 16.5" (297mm x 419mm)
- Maximum Work Area: 32.0" x 32.0" (813mm x 813mm)

COMPUTER*

- Multi Core Processor - 3 GHz
- 1 TB 7200 RPM HD, 8 - 16 GB RAM
- Flat Panel Monitor
- Ethernet Connection
- Windows 10 - 64-Bit
- 2 avail. USB2 or USB3 ports

*Recommended customer supplied minimum PC requirements.

ADDITIONAL SYSTEM COMPONENTS

- Software Protection Key
- Transmissive Lighting Package (*Lite only version*)
- Scanning Accessory Package (*Lite only version*)
- Auxiliary: Software-only, extra seat (Optional)

(All specifications and designs subject to change without notice.)

The following are trademarks of the indicated companies: Gerber, Ucamco; Windows 10, Microsoft®. ScanINSPECT AFI Lite™ is a trademark of ScanCAD International, Inc.



26437 Conifer Rd.

Conifer, CO 80433 USA

T: +1 303.697.8888 F: +1 303.697.8580

info@scancad.com www.scancad.com